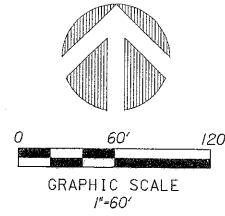


# CRITCHFIELD PLAT- PRESERVE AREA 2

PETITION NO. PDD 2004-206 (ASCOT -441 ATLANTIC P.U.D.)  
 A PORTION OF TRACT 3, BLOCK 18, "PALM BEACH FARMS COMPANY  
 PLAT NO. 1" (P.B. 2, PG. 26, P.B.C.R.) IN SECTION 18, TOWNSHIP 46 SOUTH,  
 RANGE 42 EAST, PALM BEACH COUNTY, FLORIDA.  
 DECEMBER, 2005

36



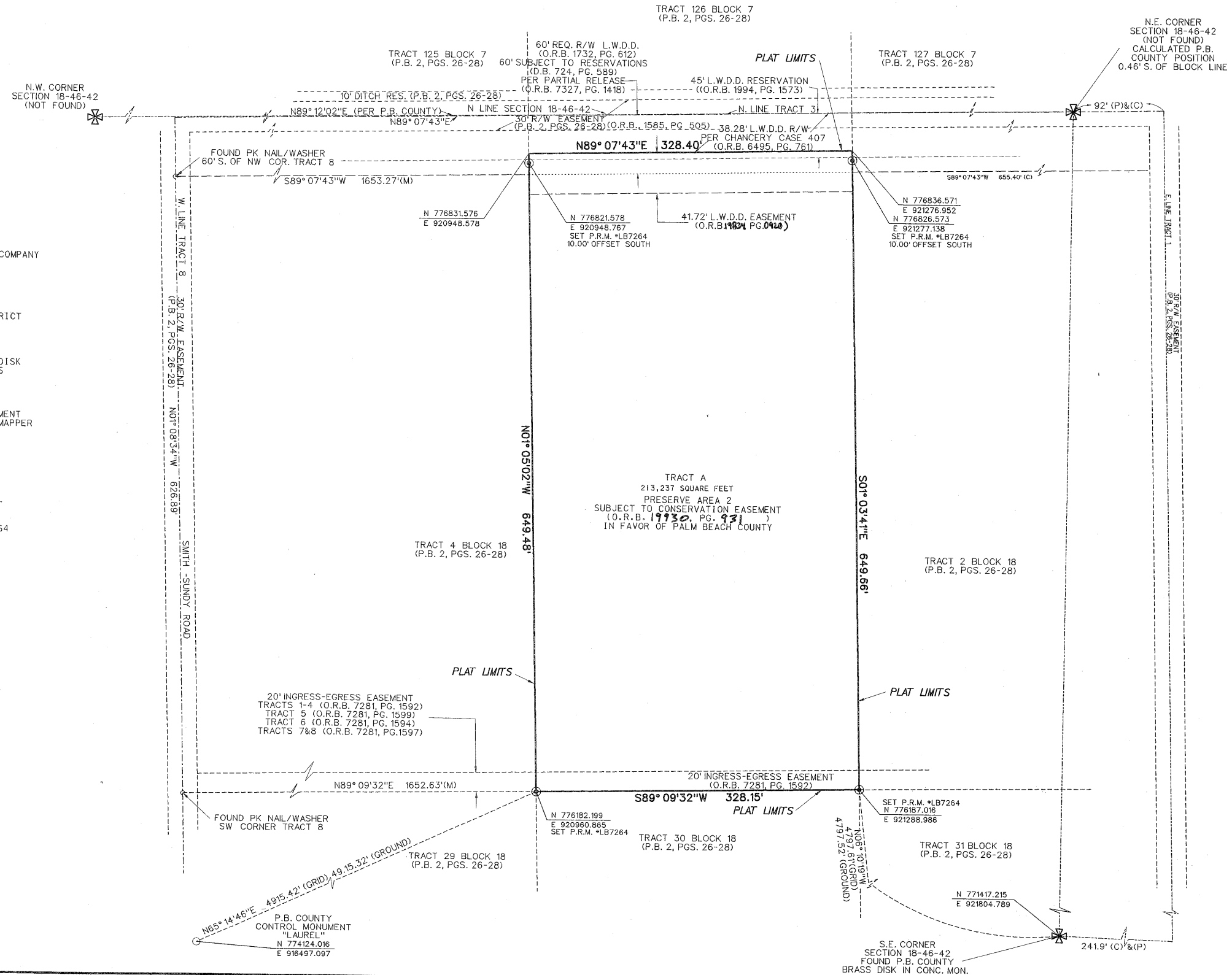
SHEET 2 OF 2

**ABBREVIATIONS:**

- CONC. COR. . . . . CONCRETE CORNER
- D . . . . . DELTA (CENTRAL ANGLE)
- D.E. . . . . DRAINAGE EASEMENT
- F.P. & L. CO. . . . . FLORIDA POWER AND LIGHT COMPANY
- I.P. . . . . IRON PIPE
- I.R.C. . . . . IRON ROD AND CAP
- L . . . . . ARLENGTH
- L.B. . . . . LICENSED BUSINESS
- L.E. . . . . LANDSCAPE EASEMENT
- L.S. . . . . LICENSED SURVEYOR
- L.W.D.D. . . . . LAKE WORTH DRAINAGE DISTRICT
- MON. . . . . MONUMENT
- O.R.B. . . . . OFFICIAL RECORDS BOOK
- N.R. . . . . NON-RADIAL
- P.B. . . . . PLAT BOOK
- P.B.C.B.D. . . . . PALM BEACH COUNTY BRASS DISK
- P.B.C.R. . . . . PALM BEACH COUNTY RECORDS
- PG. . . . . PAGE
- P.C.P. . . . . PERMANENT CONTROL POINT
- P.O.B. . . . . POINT OF BEGINNING
- P.O.C. . . . . POINT OF COMMENCEMENT
- P.R.M. . . . . PERMANENT REFERENCE MONUMENT
- P.S.M. . . . . PROFESSIONAL SURVEYOR & MAPPER
- P.U.D. . . . . PLANNED UNIT DEVELOPMENT
- R . . . . . RADIUS
- R/W . . . . . RIGHT-OF-WAY
- SEC. . . . . SECTION
- S.F. . . . . SQUARE FEET
- U.E. . . . . UTILITY EASEMENT

**LEGEND:**

- ⊙ . . . . . SET P.R.M. (UNLESS OTHERWISE NOTED) - 4" X 4" CONC. MON. WITH ALUMINUM DISK STAMPED P.R.M. #LB7264
- . . . . . P.C.P.
- ⊕ . . . . . CENTERLINE



DATE: 12/15/05  
 DRAWN BY: J.S.H.  
 CHECKED BY: J.S.H.  
 TITLE: CRITCHFIELD PLAT- PRESERVE AREA 2  
 SHEET: 2 OF 2